

האגף לקידום נשים ושילובן דו"ח פעילות לשנת 2004

2004

13		-	
15		
16
17	-	.
23
39	..	-	.
45			
47		
521
552
583
614
645
666
697
738
769
7810
8111
8412
8813
9114
9415
9716
10017
10318
10619
115			
1171
1202
122	"	.3



1244
1265
129 () . .	.6
1327
1358
1389
14010
14311
147		

		'	
16		1	
16		2	
17		3	
18	2003-2004 ,	4	
19	,2004 – 1997	5	
21	2002-2004 ,	6	
24	2002-2004 ,	- _____	7
26	2002-2004 ,	- " _____	8
27	2002-2004 ,	- _____	9
29	2002-2004 ,	- _____	10
31	2002-2004 ,	- _____	11
32	2000-2004 ,	- _____	12
33	2002-2004 ,	- _____	13
35	2002-2004 ,	- _____	14
36	2002-2004 ,	- _____	15
37	2002-2004 ,	- _____	16
40	2002-2004 ,	' _____	17
41	2002-2004 ,	' _____	18
42	2002-2004 ,	' _____	19
50			20
51			21
52			22
53	,		23
53	,	"	24
55			25
56			26
56		"	27

		'
58		28
59		29
59	"	30
61	'	31
62	'	32
62	"	33
64		34
64	'	35
65	'	36
66		37
67	'	38
67	'	39
69		40
70		41
70		42
71	"	43
73		44
74	'	45
74	'	46
75	'	47
76	'	48
76	'	49
77	'	50
78		51

		'
79	'	52
79	"	53
80	'	54
81		55
82	'	56
82	"	57
84		58
85	'	59
85	'	60
86	'	61
86	'	62
88	'	63
89	'	64
89	'	65
91	'	66
92	'	67
92	"	68
94		69
95	'	70
95	'	71
97		72
98	'	73
98	"	74
100		75
101	'	76

101	' "	77
103	,	78
104	'	79
104	' "	80
107	,	81
108		82
108	,	83
109		84
111	' '	85
112	" '	86
112	' ' 2003-2004	87
113	' ' 2003-2004	88
117	'	89
118	'	90
118	' "	91
120	'	92
121	'	93
122	"	94
123	' "	95
124		96
125	'	97
126	,	98
127	' '	99
127	"	100
128		101
129	' ' ()	102

		'
130	' () . .	103
130	' () . .	104
132	,	105
133	' ,	106
133	' " ,	107
134	' ,	108
135	,	109
136	' ,	110
136	' ,	111
138	,	112
139	' ,	113
140		114
141	' ,	115
141	' ,	116
141	' ,	117
143	,	118
144	' ,	119
144	' ,	120
149	2002-2004 ,	121
151	2002-2004 , ,	122
152	2002-2004 , , ,	123
160	2002-2004 , ,	124

20	1997-2004 ,	. 1
20	2001-2004 ,	. 2
22	2000-2004 ,	. 3
23	2004 ,	. 4
24	2002-2004 ,	. 5
25	2000-2004 , - _____	. 6
27	2000-2004 , - " _____	. 7
28	2000-2004 , - _____	. 8
30	2000-2004 , - _____	. 9
31	2000-2004 , - _____	. 10
32	2000-2004 , - _____	. 11
34	2000-2004 , - _____	. 12
36	2000-2004 , - _____	. 13
37	2000-2004 , - _____	. 14
38	2001-2004 , - _____	. 15
43	2001-2004 ,()	. 16
43	2001-2004 ,()	. 17
54	-	. 18
57	-	. 19
60	-	. 20
63	-	. 21
65	-	. 22
68	-	. 23
72	-	. 24
75	-	. 25
80	-	. 26
83	-	. 27
87	-	. 28
90	-	. 29
93	-	. 30
96	-	. 31
99	-	. 32

		'
102	-	. 33
105	-	. 34
106	2004 ,	. 35
108	2002-2004 ,	. 36
109	1997-2004 ,	. 37
110	2004 , ,	. 38
119	-	. 39
121	-	. 40
123	- "	. 41
125	-	. 42
128	-	. 43
131	-() . .	. 44
134	-	. 45
137	-	. 46
139	-	. 47
142	-	. 48
145	-	. 49
149		. 50
150		. 51
151	,	. 52
153		. 53
153	-	. 54
153		. 55
153		. 56
155		. 57
155		. 58
156	,	. 59
156	,	. 60
156	,	. 61
157		. 62

		'
157		. 63
158	'	. 64
158	'	. 65
158	'	. 66
159	-	. 67
159	-	. 68
161	2002-2004 , , ,	. 69
162	2002-2004 , , ,	. 70
163	2002-2004 , , ,	. 71
164	2002-2004 , , ,	. 72

2004

51,216

,2004

.2003

50,382

,65%

.3

() 2004 , :1'

44	56	
36	64	1-5
37	63	6-10
37	63	11-15
33	67	16-20
32	68	21-25
30	70	26-30
37	63	30

2

75%)

.(25%

() 2004 , :2'

46	54	
32	68	
31	69	
25	75	-
36	64	
40	60	
65	35	
61	39	*

*

(

65% ,2004 ,2003

2002 (" 46)

(" 44 - 45)

:3'

() 2002-2004

2004			2003			2002			
		"			"			"	
335 (59%)	236 (41%)	571	332 (60%)	224 (40%)	556	344 (62%)	211 (38%)	555	" 46
292 (52%)	266 (48%)	558	302 (53%)	264 (47%)	566	330 (56%)	256 (44%)	586	" 45
618 (63%)	359 (37%)	977	622 (64%)	348 (36%)	970	616 (65%)	334 (35%)	950	" 44
1,582 (56%)	1,241 (44%)	2,823	1,574 (57%)	1,202 (43%)	2,776	1,548 (56%)	1,206 (44%)	2,754	" 43
2,307 (53%)	2,010 (47%)	4,317	2,258 (53%)	1,993 (47%)	4,251	2,166 (53%)	1,947 (47%)	4,113	" 42
2,121 (46%)	2,463 (54%)	4,584	2,203 (47%)	2,445 (53%)	4,648	2,248 (48%)	2,444 (52%)	4,692	" 41
2,214 (36%)	3,930 (64%)	6,144	2,246 (37%)	3,780 (63%)	6,026	2,228 (38%)	3,677 (62%)	5,905	" 40
8,696 (28%)	22,546 (72%)	31,242	8,402 (27%)	22,187 (73%)	30,589	8,479 (28%)	21,475 (72%)	29,954	" 39
18,165 (35%)	33,051 (65%)	51,216	17,939 (36%)	32,443 (64%)	50,382	17,959 (36%)	31,550 (64%)	49,509	

4
2004 2003

:4'

() 2003-2004

2004					2003					
	"		"	"		"		"	"	
1.8	335	0.7	236	571	1.9	332	0.7	224	556	" 46
1.6	292	0.8	266	558	1.7	302	0.8	264	566	" 45
3.4	618	1.1	359	977	3.5	622	1.1	348	970	" 44
8.7	1,582	3.7	1,241	2,823	8.8	1,574	3.7	1,202	2,776	" 43
12.7	2,307	6.1	2,010	4,317	12.6	2,258	6.1	1,993	4,251	" 42
11.7	2,121	7.5	2,463	4,584	12.3	2,203	7.5	2,445	4,648	" 41
12.2	2,214	11.9	3,930	6,144	12.5	2,246	11.7	3,780	6,026	" 40
47.9	8,696	68.2	22,546	31,242	46.8	8,402	68.4	22,187	30,589	" 39
100	18,165	100	33,051	51,216	100	17,939	100	32,443	50,382	

2004 - 2003

5

.()

,43% - 42% - ,

.()

()

,1997-2004

:5'

()

(8)		(5-7)		(1-4)		()
30	70	50	50	63	37	1997 (62%)
30	70	49	51	62	38	1998 (62%)
29	71	47	53	60	40	1999 (63%)
29	71	47	53	59	41	2000 (63%)
28	72	46	54	59	41	2001 (64%)
28	72	45	55	59	41	2002 (64%)
28	72	45	55	58	42	2003 (64%)
28	72	41	56	57	43	2004 (65%)

1997

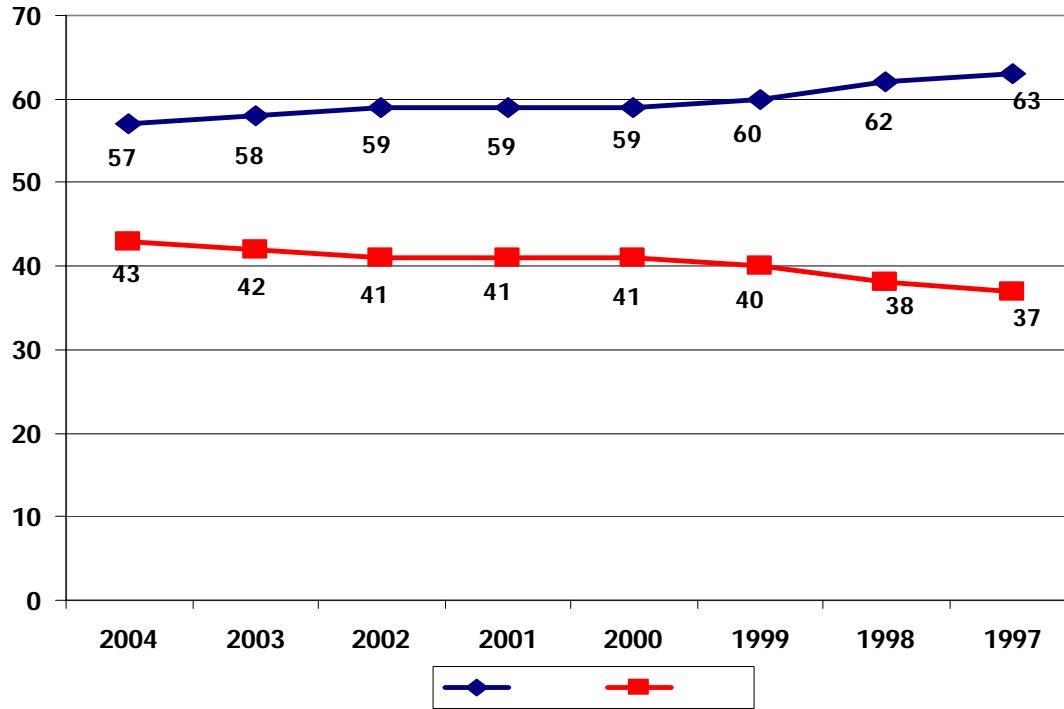
.2004

43% - 2003

42% -

() ,1997-2004 ,

:1'



.2002

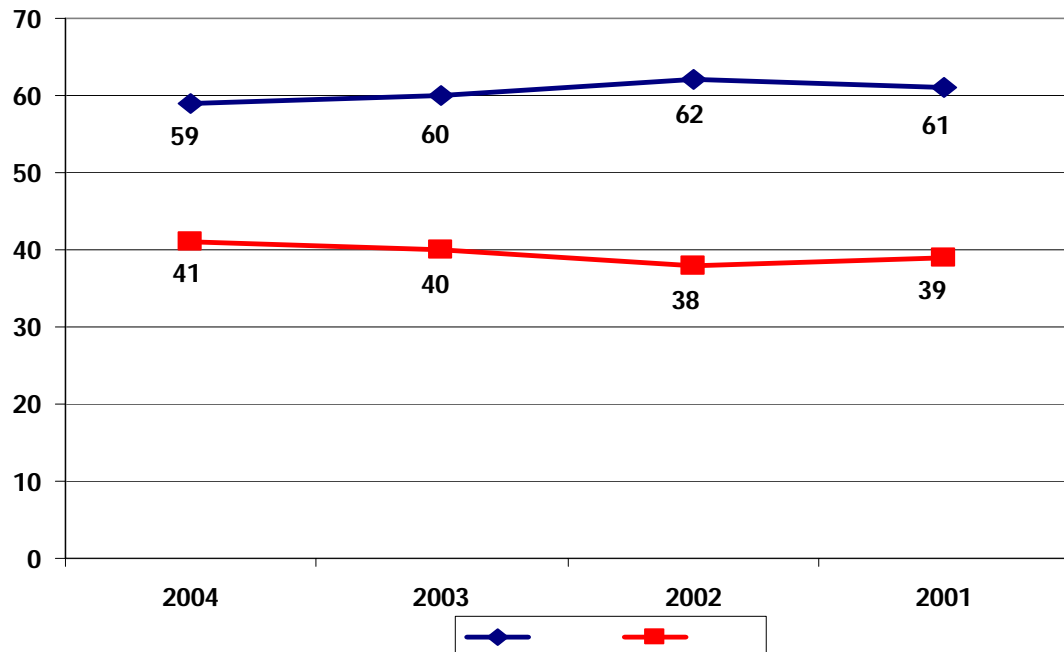
.2004

41% - 2003

40% - ,

() ,2001-2004 ,

:2'



" 43 - " 46 -
 " 40 - " 42 -
 " 39 -

" ,2003 - 2002
 3-

" 44-46

.(29% ,26%) 3% -

2004- 2003

.(6)

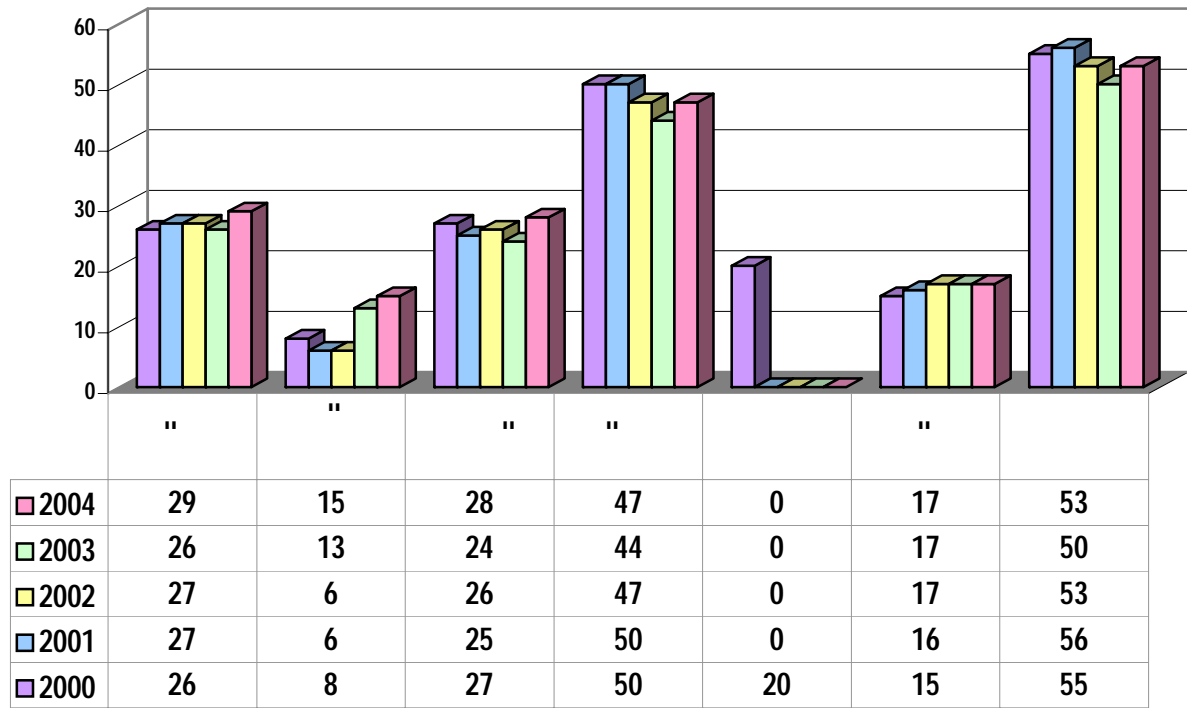
:6'

() 2002-2004

2004			2003			2002			
		"			"			"	
37 (47%)	42 (53%)	79	41 (50%)	41 (50%)	82	37 (47%)	41 (53%)	78	
103 (83%)	21 (17%)	124	113 (84%)	22 (16%)	135	121 (83%)	25 (17%)	146	
2 (100%)	0	2	5 (100%)	0	5	3 (100%)	0	3	
18 (53%)	16 (47%)	34	19 (56%)	15 (44%)	34	17 (53%)	15 (47%)	32	
226 (72%)	89 (28%)	334	242 (76%)	78 (24%)	320	223 (74%)	78 (26%)	301	
28 (85%)	5 (15%)	37	33 (87%)	5 (13%)	38	33 (94%)	2 (6%)	35	"
434 (71%)	176 (29%)	610	453 (74%)	161 (26%)	614	434 (73%)	161 (27%)	595	

() ,2000-2004 ,

:3'



29% ,2004

610

3%

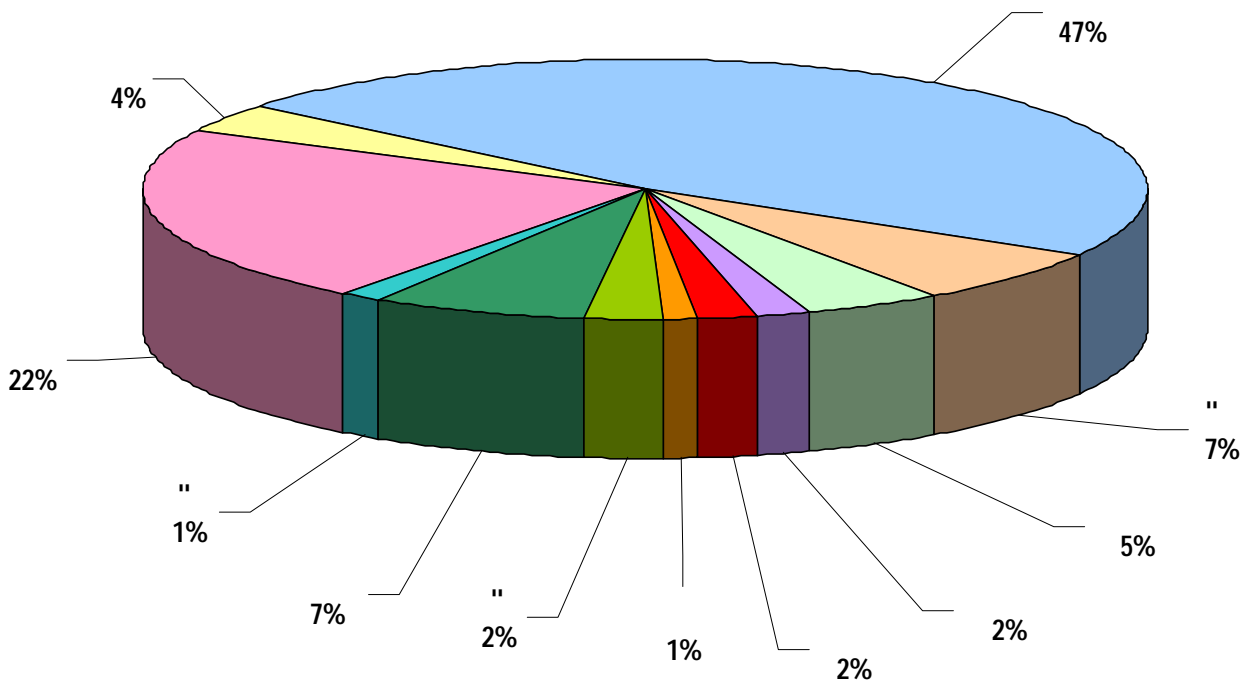
(4)

,2004 - ,2003
2%- ,(47%)

,2003

.(22%)

() ,2004 , :4 '



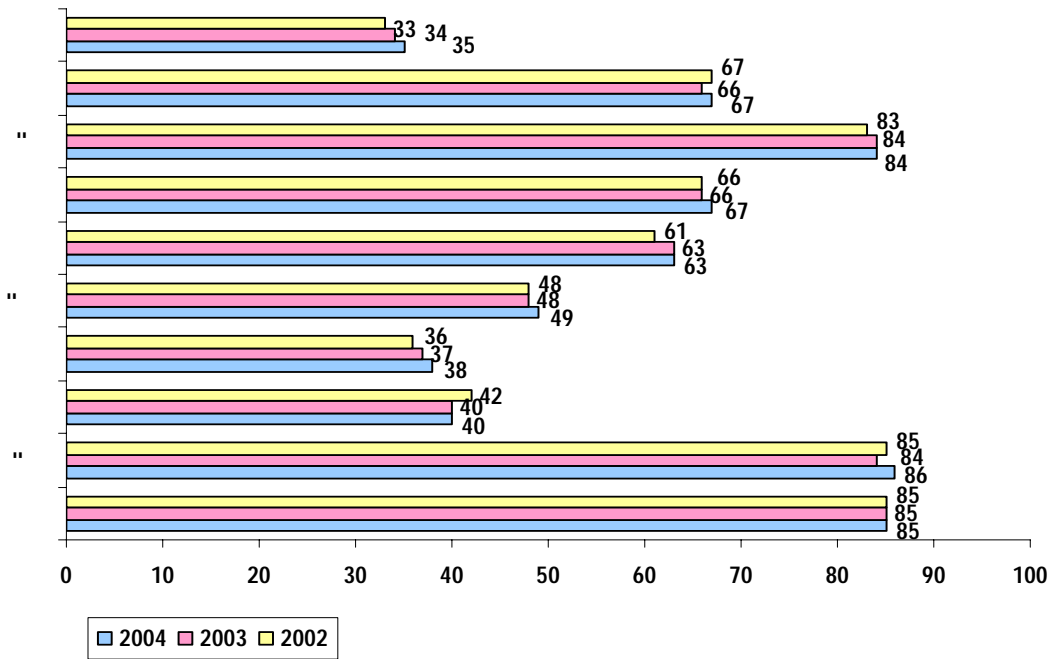
,5 2004-2002

1%

: ,2003

.(63%) (67%) ;(67%) ;(84%) " ;(86%) " ;(85%)

() , 2002-2004 , :5 '



.1

15,259 , 24,129 , 2004 31-
 .2003 63%
 2002-2004 7
 2003 , 2002 (23)
 .3% - 2004

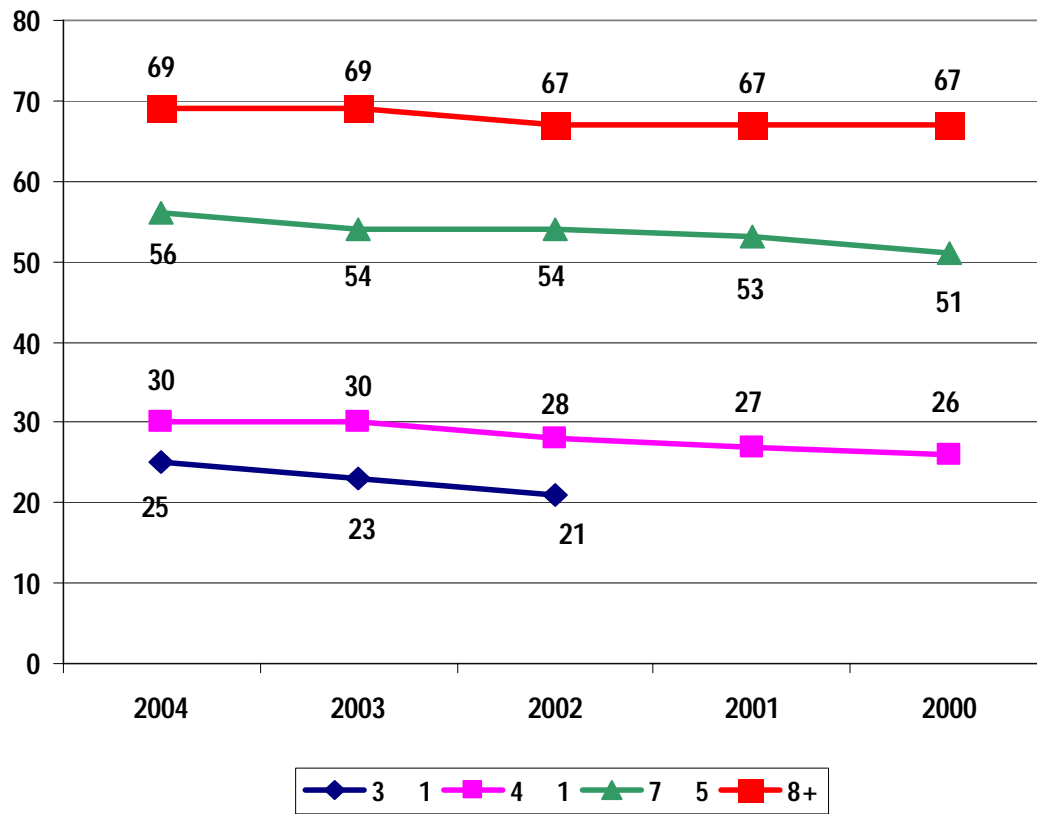
() 2002-2004 , :7 '

2004			2003			2002			
	"	"		"	"		"	"	
1 (100%)	0	1	1 (100%)	0	1	1 (100%)	0	1	24
85 (80%)	21 (20%)	106	91 (83%)	19 (17%)	110	103 (85%)	18 (15%)	121	23
155 (72%)	59 (28%)	214	149 (73%)	54 (27%)	203	152 (75%)	50 (25%)	202	22
515 (67%)	250 (33%)	765	493 (68%)	236 (32%)	729	481 (69%)	221 (31%)	702	21
1,028 (57%)	770 (43%)	1,798	969 (57%)	738 (43%)	1,707	911 (57%)	695 (43%)	1,606	20
843 (45%)	1,013 (55%)	1,856	933 (47%)	1,043 (53%)	1,976	957 (48%)	1,044 (52%)	2,001	19
1,285 (37%)	2,153 (63%)	3,438	1,292 (39%)	2,006 (61%)	3,298	1,276 (40%)	1,939 (60%)	3,215	18
4,958 (31%)	10,993 (69%)	15,951	4,631 (30.5%)	10,535 (69.5%)	15,166	4,698 (33%)	9,740 (67%)	14,438	17
8,870 (37%)	15,259 (63%)	24,129	8,559 (37%)	14,631 (63%)	23,190	8,579 (39%)	13,707 (61%)	22,286	

(6)
 .2003

2002 .2002 4% -
 2004 23% - 2003 ,21%
 .25% -

() 2000-2004 , :6 '



49% , 1,751 3,574 " 2004 31- .2

.2003

2002-2004

8

19% 2003 .(46)
 ,2004 (45) .17% - 2004
 8% -

() 2002-2004 , " : 8 '

2004			2003			2002			
		"			"			"	
19 (83%)	4 (17%)	23	21 (81%)	5 (19%)	26	23 (92%)	2 (8%)	25	46
24 (92%)	2 (8%)	26	24 (100%)	0	24	25 (100%)	0	25	45
194 (76%)	60 (24%)	254	197 (77%)	59 (23%)	256	186 (78%)	52 (22%)	238	44
202 (70%)	85 (30%)	287	208 (72%)	82 (28%)	290	205 (71%)	85 (29%)	290	43
348 (61%)	223 (39%)	571	362 (61%)	233 (39%)	595	307 (60%)	204 (40%)	511	42
385 (52%)	352 (48%)	737	405 (54%)	340 (46%)	745	426 (54%)	366 (46%)	792	41
317 (43%)	410 (56%)	727	330 (45%)	399 (55%)	729	332 (47%)	381 (53%)	713	40
334 (35%)	615 (65%)	949	357 (36%)	637 (64%)	994	392 (36%)	684 (64%)	1,076	39
1,823 (51%)	1,751 (49%)	3,574	1,904 (52%)	1,755 (48%)	3,659	1,896 (52%)	1,774 (48%)	3,670	

,7 . "

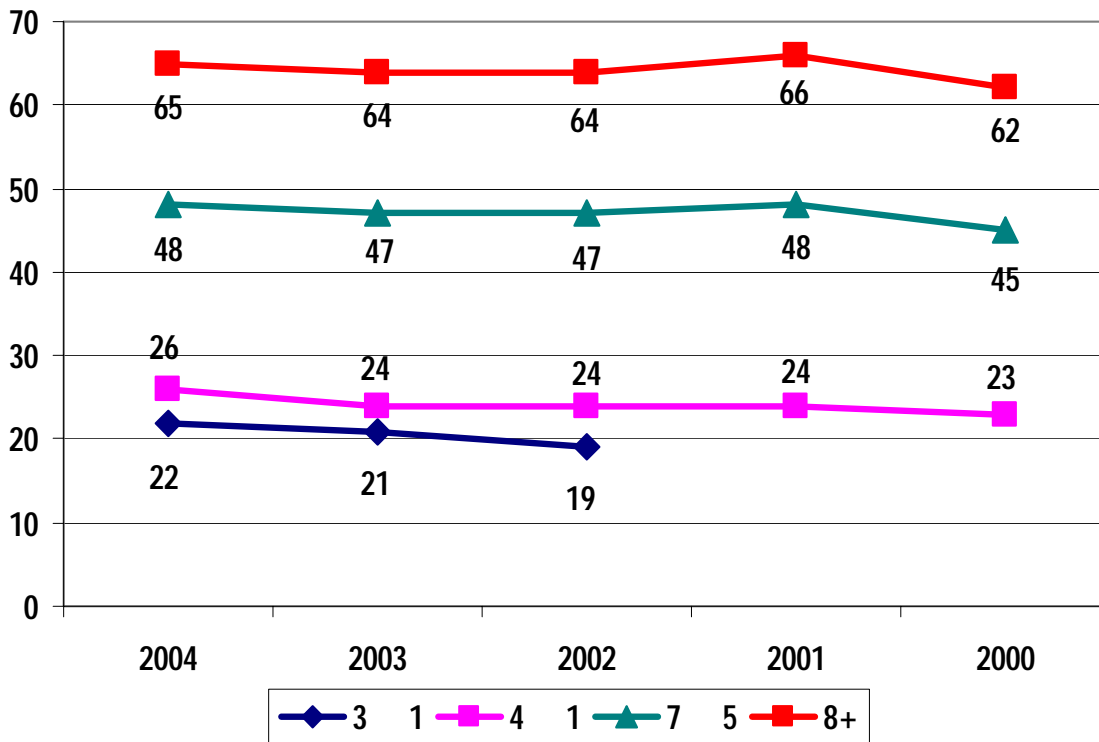
.2004 2003 ,

.2004 26% - 2003 24% -

,2004 22% - 2003 21% -

.2002

() 2000-2004 , " :7'



.3

876 , 2,317 2004 31-
 ,2003 . 38%
 .2002

() 2002-2004 , :9'

2004			2003			2002			
	"	"		"	"		"	"	
2 (100%)	0	2	2 (67%)	1 (33%)	3	2 (67%)	1 (33%)	3	46
6 (86%)	1 (14%)	7	6 (86%)	1 (14%)	7	6 (86%)	1 (14%)	7	45
54 (84%)	10 (16%)	64	60 (87%)	9 (13%)	69	55 (85%)	10 (15%)	65	44
74 (72%)	28 (28%)	102	71 (74%)	25 (26%)	96	73 (75%)	24 (25%)	97	43
174 (71%)	70 (29%)	244	183 (74%)	64 (26%)	247	171 (75%)	56 (25%)	227	42
428 (73%)	154 (27%)	582	419 (73%)	154 (27%)	573	415 (74%)	147 (26%)	562	41
393 (58%)	282 (42%)	675	400 (60%)	266 (40%)	666	403 (64%)	230 (36%)	633	40
310 (48%)	331 (52%)	641	323 (49%)	333 (51%)	656	336 (49%)	350 (51%)	686	39
1,441 (62%)	876 (38%)	2,317	1,464 (63%)	853 (37%)	2,317	1,461 (64%)	819 (36%)	2,280	

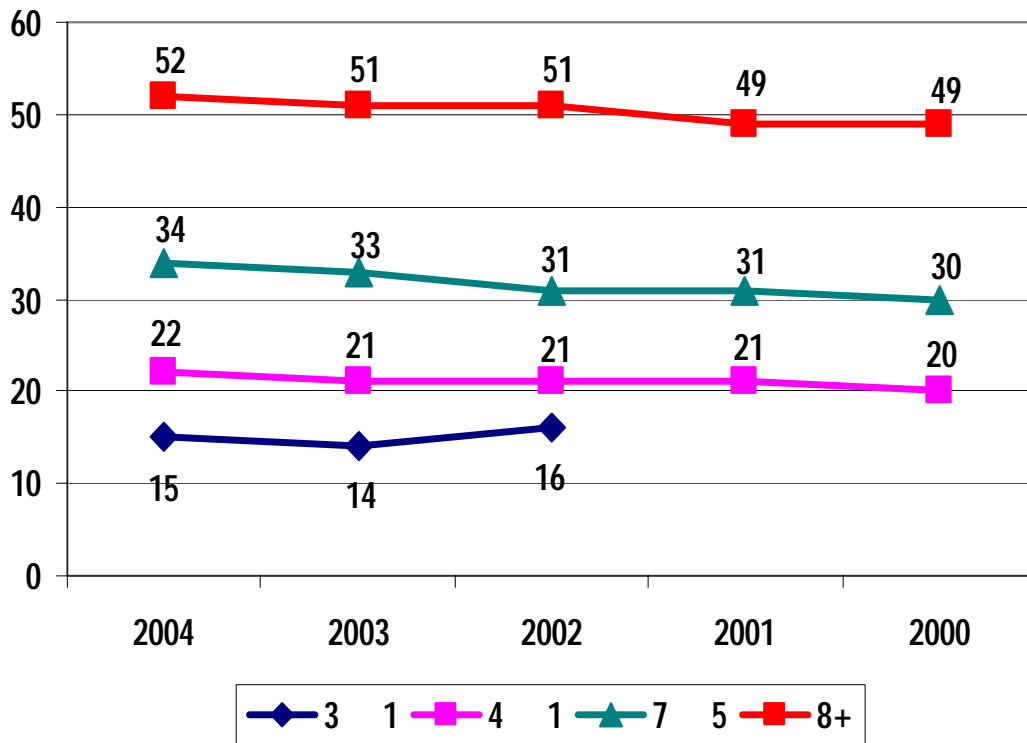
(8)

,2003

.2002

.2004 22% - 2003 21% -
,2004 15% - 2003 14% -

() 2000-2004 , :8 '



40% , 368 917 2004 31-

2002-2004 10

(41)

.2004 17% - 2003 15% -

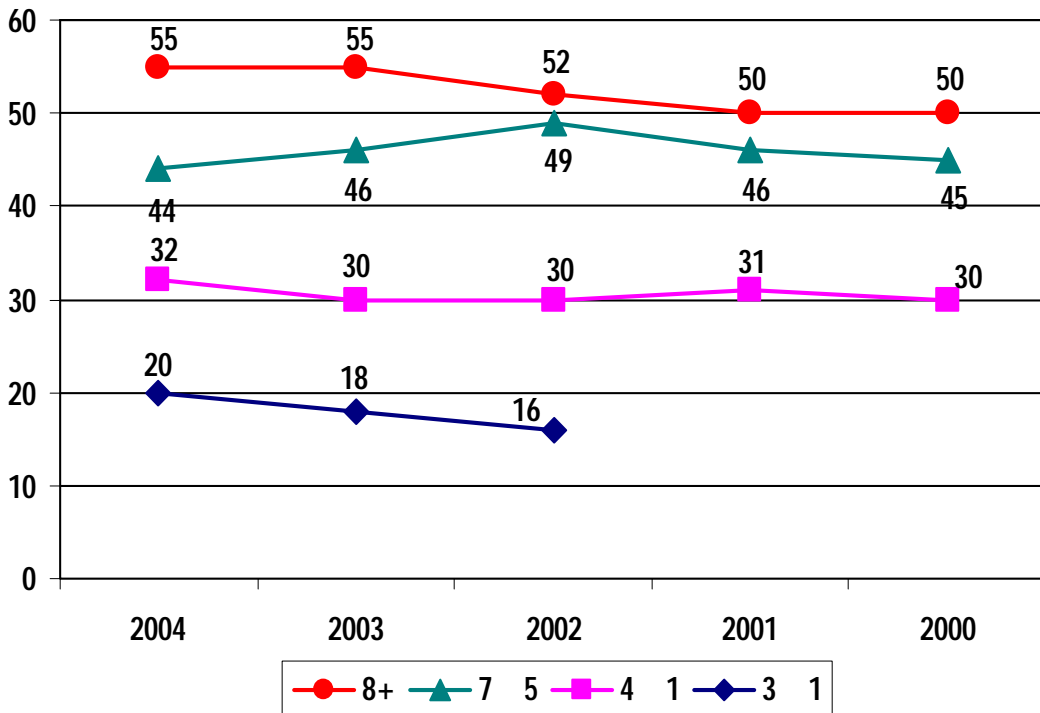
(_____) 2002-2004 :10'

2004			2003			2002			
		"			"			"	
4 (100%)	0	4	5 (100%)	0	5	5 (100%)	0	5	43
19 (68%)	9 (32%)	28	19 (68%)	9 (32%)	28	18 (67%)	9 (33%)	27	42
66 (83%)	13 (17%)	79	65 (85%)	11 (15%)	76	73 (88%)	10 (12%)	83	41
179 (63%)	106 (37%)	285	185 (65%)	98 (35%)	283	177 (64%)	100 (36%)	277	40
137 (55%)	110 (45%)	247	133 (51%)	126 (49%)	259	157 (48%)	172 (52%)	329	39
90 (59%)	62 (41%)	152	84 (60%)	55 (40%)	139	84 (60%)	57 (40%)	141	38
54 (44%)	68 (56%)	122	55 (44%)	70 (56%)	125	62 (47%)	70 (53%)	132	37
549 (60%)	368 (40%)	917	546 (60%)	369 (40%)	915	576 (58%)	418 (42%)	994	

(9)
 .2003

.2004 32% - 2003 30% -
 ,2004 20% - 2003 18% -

() 2000-2004 , _____ :9'



67% , 612 918 2004 31-

() 2002-2004 , _____ :11'

2004			2003			2002			
		"			"			"	
31 (48%)	34 (52%)	65	33 (49%)	35 (51%)	68	32 (54%)	27 (46%)	59	6
60 (44%)	75 (56%)	135	63 (47%)	72 (53%)	135	59 (44%)	74 (56%)	133	5
21 (41%)	30 (59%)	51	17 (34%)	33 (66%)	50	17 (36%)	30 (64%)	47	4
27 (32%)	58 (68%)	85	27 (37%)	47 (63%)	74	26 (34%)	50 (66%)	76	3
18 (24%)	57 (76%)	75	19 (34%)	37 (66%)	56	16 (29%)	40 (71%)	56	2
69 (30%)	160 (70%)	229	57 (29%)	141 (71%)	198	49 (28%)	128 (72%)	177	1
0	1 (100%)	1	1 (33%)	2 (67%)	3	1 (25%)	3 (75%)	4	
80 (29%)	197 (71%)	277	88 (28%)	224 (72%)	312	87 (30%)	199 (70%)	286	2
306 (33%)	612 (67%)	918	305 (34%)	591 (66%)	896	287 (34%)	551 (66%)	838	

2003-2004

10

2% (55%)

8

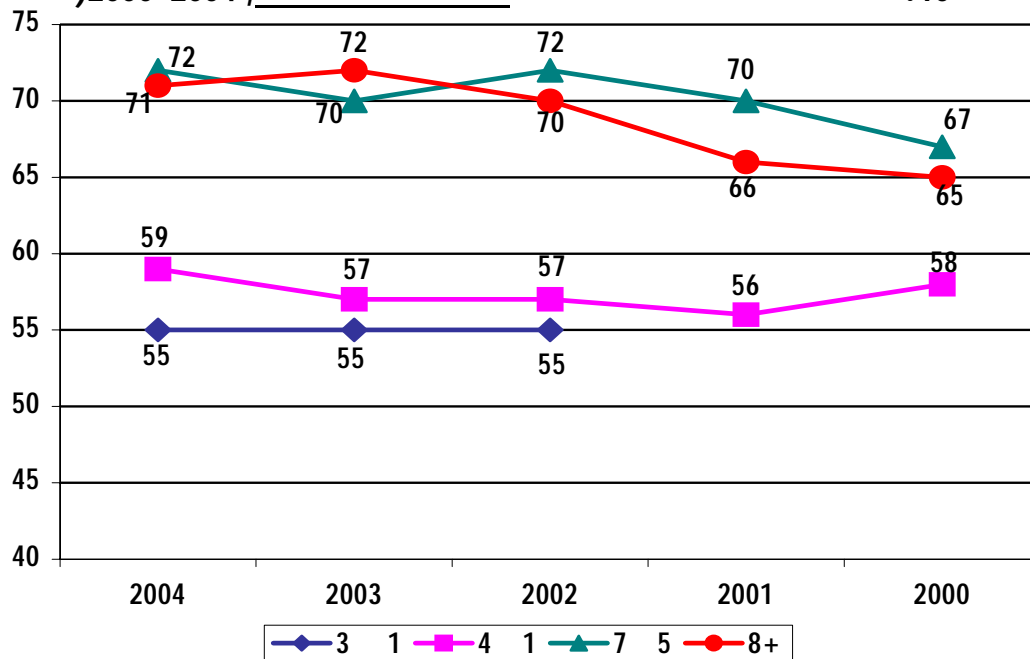
.2004

2003

2%

(5-7)

() 2000-2004 , _____ :10'



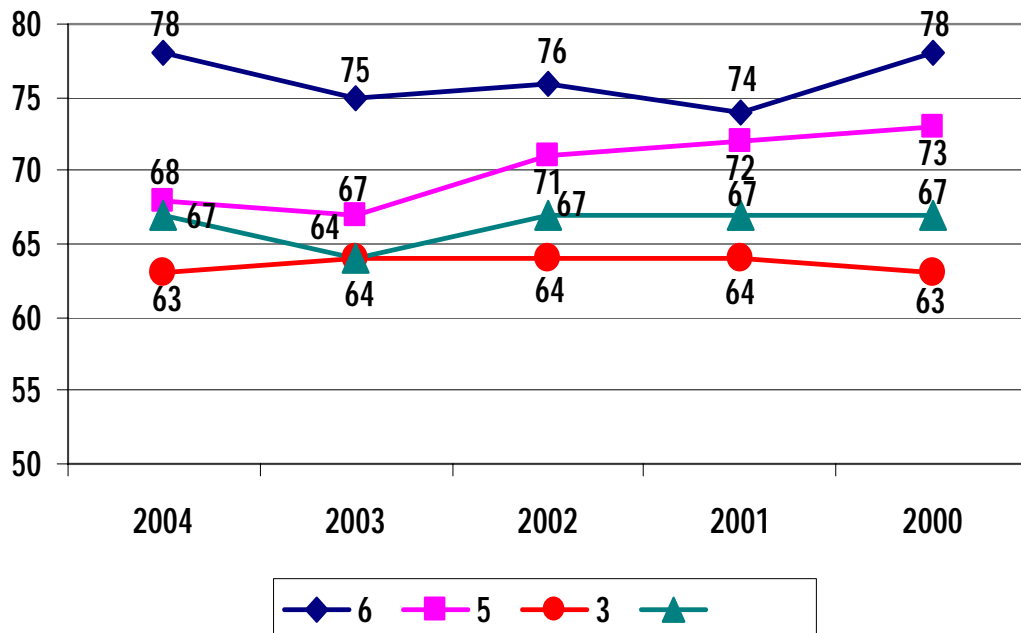
67% , 397 597 2004 31-
 .2003 3%-

() 2002-2004 , _____ :12

2004			2003			2002			
	"	"		"	"		"	"	
22 (22%)	78 (78%)	100	23 (25%)	68 (75%)	91	22 (24%)	69 (76%)	91	6
31 (32%)	65 (68%)	96	34 (33%)	69 (67%)	103	24 (29%)	58 (71%)	82	5
147 (37%)	254 (63%)	401	145 (36%)	255 (64%)	400	142 (36%)	256 (64%)	398	3
200 (33%)	397 (67%)	597	145 (36%)	392 (64%)	594	188 (33%)	383 (67%)	571	

6) 11
 .2000-2004 , (5 -

() 2000-2004 , _____ :11 '



1,074
.2003

1,279

2004

31-

84%

2002-2004

13

(2)

2002-2004 ,

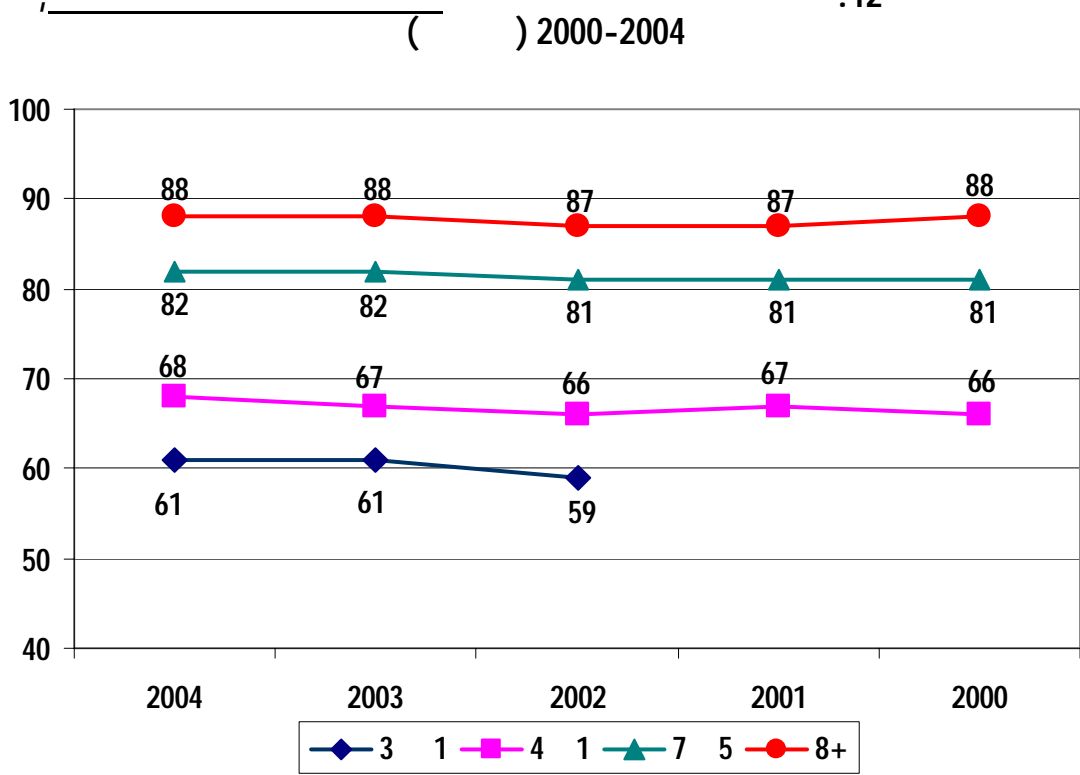
:13

()

2004			2003			2002			
		"			"			"	
3 (100%)	0	3	3 (75%)	1 (25%)	4	3 (75%)	1 (25%)	4	2
3 (27%)	0 (73%)	11	4 (29%)	10 (71%)	14	5 (36%)	9 (64%)	14	1
6 (35%)	11 (65%)	17	8 (40%)	12 (60%)	20	7 (37%)	12 (63%)	19	
18 (28%)	46 (72%)	64	17 (28%)	43 (72%)	60	18 (30%)	42 (70%)	60	
21 (301%)	48 (70%)	69	21 (31%)	47 (69%)	68	20 (30%)	46 (70%)	66	
47 (19%)	198 (81%)	245	44 (19%)	188 (81%)	232	44 (19%)	184 (81%)	228	
28 (12%)	203 (88%)	231	32 (14%)	202 (86%)	234	33 (15%)	191 (85%)	224	
79 (12%)	560 (88%)	639	79 (12%)	589 (88%)	668	83 (13%)	560 (87%)	643	.
205 (16%)	1,074 (84%)	1,279	208 (16%)	1,092 (84%)	1,300	213 (17%)	1,045 (83%)	1,258	

.2003

:12'



35% , 1,204 , 3,490 2004 31-
 ,2003 .2002
 2002-2004 14
 2004 2003 3% (10)
 .2002 7%

() 2002-2004 , _____ :14 '

2004			2003			2002			
		"			"			"	
1 (100%)	0	1	2 (100%)	0	2	2 (100%)	0	2	12
24 (73%)	9 (27%)	33	22 (73%)	8 (27%)	30	24 (77%)	7 (23%)	31	11
52 (72%)	20 (28%)	72	56 (75%)	19 (25%)	75	57 (79%)	15 (21%)	72	10
315 (83%)	65 (17%)	380	316 (83%)	65 (17%)	381	318 (83%)	64 (17%)	382	9
458 (78%)	129 (22%)	587	444 (76%)	138 (24%)	582	455 (78%)	130 (22%)	585	8
113 (66%)	58 (34%)	171	112 (65%)	61 (35%)	173	117 (67%)	59 (33%)	176	7
56 (33%)	112 (67%)	168	56 (34%)	107 (66%)	163	58 (35%)	107 (65%)	165	6
1,267 (61%)	811 (39%)	2,078	1,261 (62%)	767 (38%)	2,028	1,232 (63%)	721 (37%)	1,953	5
2,286 (65%)	1,204 (35%)	3,490	2,269 (66%)	1,165 (34%)	3,434	2,263 (67%)	1,103 (33%)	3,366	

.(13)

.2003

.19% - 2003

,2004 27% - 2003 25% -

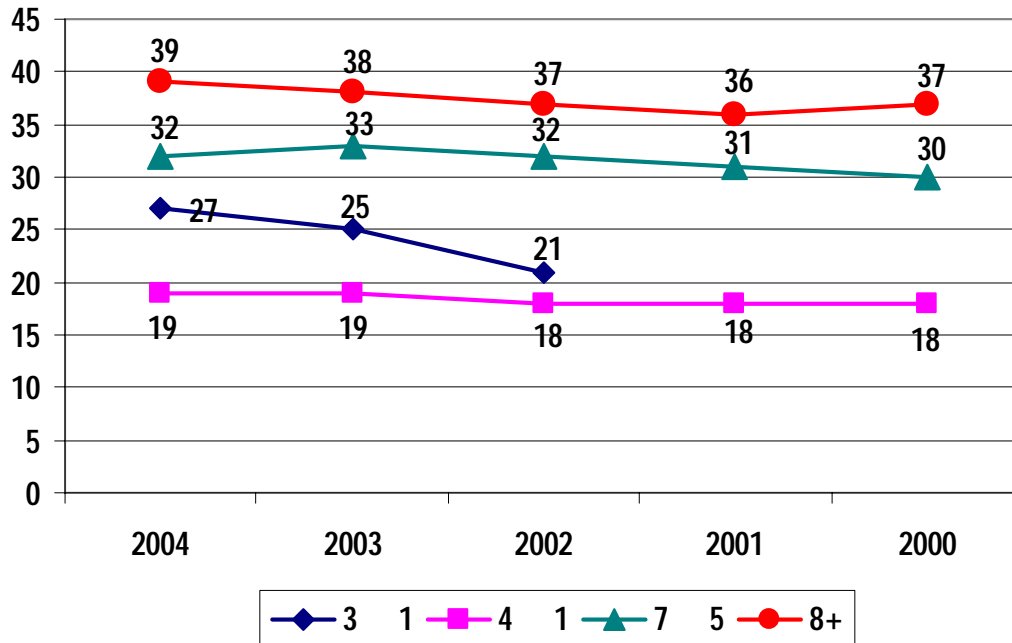
.2002

6%

,2%

() 2000-2004 , _____

:13'



.9

85% , 9,643 , 11,344 2004 31-
.2003

() 2002-2004 , _____

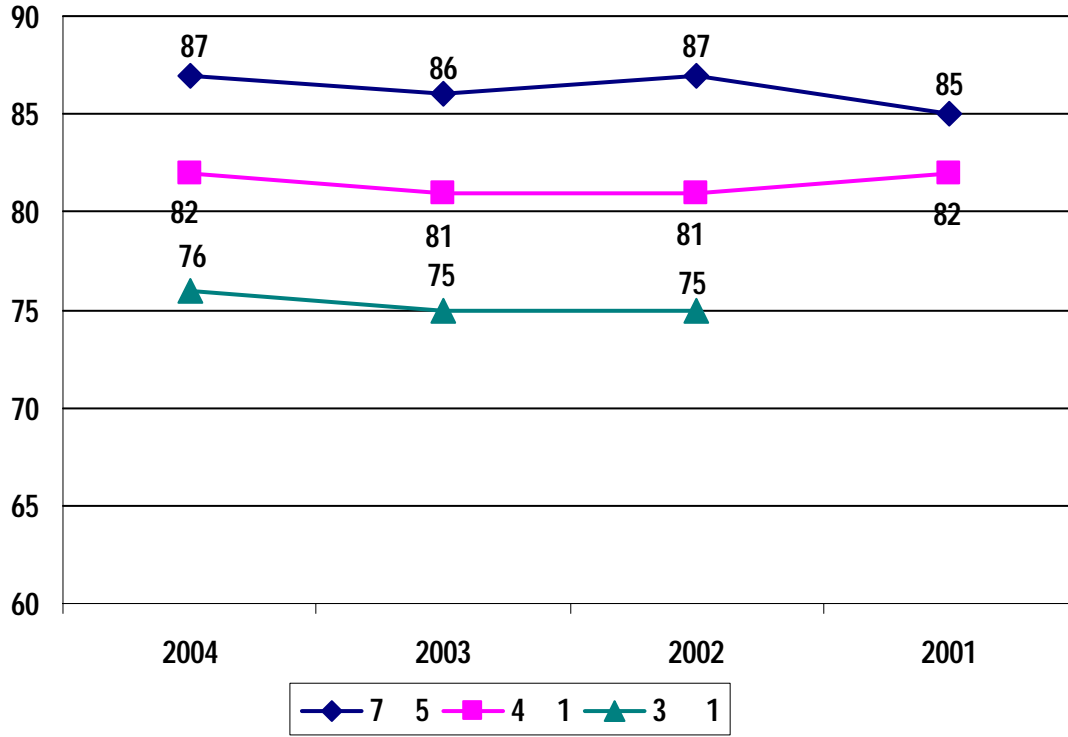
:15'

2004			2003			2002			
		"			"			"	
0	1 (100%)	1	0	1 (100%)	1	0	1 (100%)	1	21
0	9 (100%)	9	0	7 (100%)	7	0	9 (100%)	9	20
0	12 (100%)	12	1 (8%)	12 (92%)	13	1 (9%)	10 (91%)	11	19
4 (9%)	40 (91%)	44	4 (9%)	41 (91%)	45	3 (7%)	41 (93%)	44	18
5 (8%)	61 (92%)	66	7 (11%)	56 (89%)	63	10 (16%)	52 (84%)	62	17
52 (15%)	287 (85%)	339	52 (16%)	278 (84%)	330	56 (17%)	275 (83%)	331	16
78 (13%)	543 (87%)	621	73 (12%)	555 (88%)	628	64 (10%)	564 (90%)	628	15
1,562 (15%)	8,690 (85%)	10,252	1,551 (15%)	8,718 (85%)	10,269	1,534 (15%)	8,837 (85%)	10,371	14
1,701 (15%)	9,643 (85%)	11,344	1,688 (15%)	9,668 (85%)	11,356	1,668 (15%)	9,789 (85%)	11,457	

15

() 2001-2004 , _____

:15 '



2002-2004 ,

(_____)

:17'

2004			2003			2002			
		"			"			"	
1 (100%)	0	1	1 (100%)	0	1	1 (100%)	0	1	(24)
43 (88%)	6 (12%)	49	45 (90%)	5 (10%)	50	48 (96%)	2 (4%)	50	" (46-45)
8 (89%)	1 (11%)	9	8 (80%)	2 (20%)	10	8 (80%)	2 (20%)	10	(46-45)
31 (48%)	34 (52%)	65	33 (48%)	35 (52%)	68	32 (54%)	27 (46%)	59	(' 6)
9 (32%)	19 (68%)	28	7 (24%)	22 (76%)	29	8 (29%)	20 (71%)	28	
7 (88%)	1 (12%)	8	7 (100%)	0	7	7 (100%)	0	7	* (12,11)
99 (62%)	61 (38%)	160	101 (61%)	64 (39%)	165	104 (67%)	51 (33%)	155	
59 (88%)	8 (12%)	67	61 (90%)	7 (10%)	68	64 (94%)	4 (6%)	68	

(600)

*

, " " .33% ,2003
 .(18) 22%-
 20%- 2003 17%- , 2004
 " .5% - 2002 .2004
 - .2004 24%- 2003 23%-
 .2004 16% - 2003 13%

2002-2004 ,

(' —)

:18 '

2004			2003			2002			
		"			"			"	
85 (80%)	21 (20%)	106	91 (83%)	19 (17%)	110	103 (85%)	18 (15%)	121	(23)
194 (76%)	60 (24%)	254	197 (77%)	59 (23%)	256	186 (78%)	52 (22%)	238	" (44)
54 (84%)	10 (16%)	64	60 (87%)	9 (13%)	69	55 (85%)	10 (15%)	65	(44)
60 (44%)	75 (56%)	135	63 (47%)	72 (53%)	135	59 (44%)	74 (56%)	133	(5)
9 (20%)	36 (80%)	45	12 (27%)	32 (73%)	44	8 (27%)	22 (73%)	30	
6 (43%)	8 (57%)	14	7 (39%)	11 (61%)	18	8 (44%)	10 (56%)	18	" (2 ,1)
16 (84%)	3 (16%)	19	16 (84%)	3 (16%)	19	18 (86%)	3 (14%)	21	(11)
0	1 (100%)	1	0	1 (100%)	1	0	1 (100%)	1	(' 21)
424 (67%)	214 (33%)	638	446 (68%)	206 (32%)	652	437 (70%)	190 (30%)	627	
355 (78%)	103 (22%)	458	371 (78%)	102 (22%)	473	370 (80%)	94 (20%)	464	

(600)

36% - 2003 35% -

,(19)'

, 31% -

.2004

,2004 30% - 2003 28% - "

25% -

,2004 28% - 2003 26%- ,

.2004 32% - 2003

2002-2004 ,

(' —)

:19 '

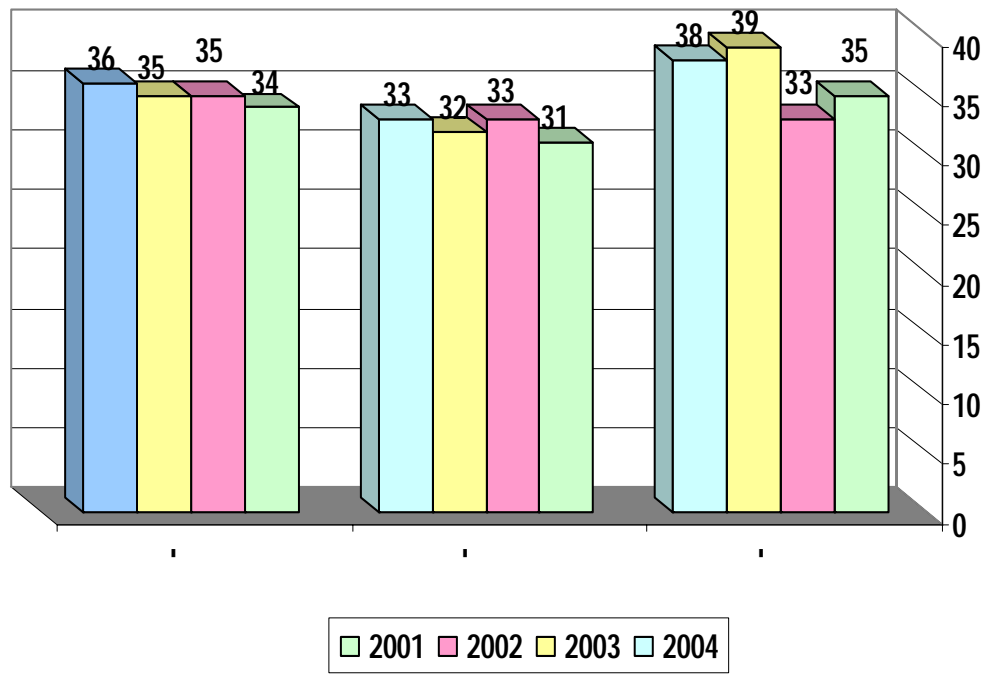
2004			2003			2002			
		"			"			"	
167 (73%)	61 (27%)	228	149 (73%)	54 (27%)	203	168 (75%)	56 (25%)	224	* (22)
202 (70%)	85 (30%)	287	206 (72%)	82 (28%)	288	205 (71%)	85 (29%)	290	" (43)
74 (72%)	28 (28%)	102	71 (74%)	25 (26%)	96	73 (75%)	24 (25%)	97	(43)
4 (100%)	0	4	5 (100%)	0	5	5 (100%)	0	5	(43)
21 (41%)	30 (59%)	51	17 (34%)	33 (66%)	50	17 (36%)	30 (64%)	47	(4)
13 (24%)	42 (76%)	55	11 (23%)	36 (77%)	47	14 (23%)	47 (77%)	61	
6 (35%)	11 (65%)	17	8 (40%)	12 (60%)	20	7 (37%)	12 (63%)	19	" ()
54 (68%)	25 (32%)	79	56 (72%)	19 (25%)	75	58 (75%)	19 (25%)	77	** (11 ,10)
0	21 (100%)	21	1 (5%)	20 (95%)	21	1 (5%)	19 (95%)	20	(20- 19)
541 (64%)	303 (36%)	844	524 (65%)	281 (35%)	805	548 (65%)	292 (35%)	840	"
507 (69%)	231 (31%)	738	496 (70%)	212 (30%)	708	517 (71%)	215 (29%)	732	

-20

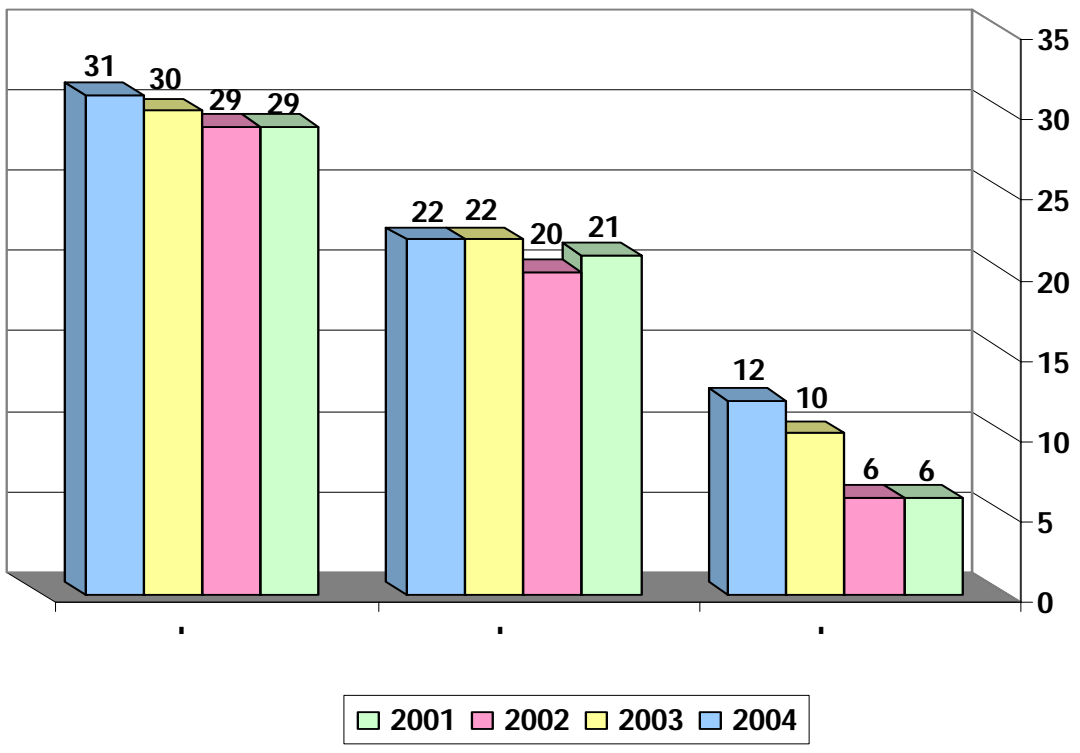
*

**

() () 2001-2004 :16'



() () 2001-2004 :17'



2004

.2004	38% - 2003	39% -	-	'
		.2003	39% - 33% - 2002	
		.2004	12%- 2003	10%- ,2%
.2004	33% - 2003	32% -	-	'
	22%			
.2004	36% - 2003	35% -	-	'
.2004	31%- 2003	30%-		'